

Impervious Area

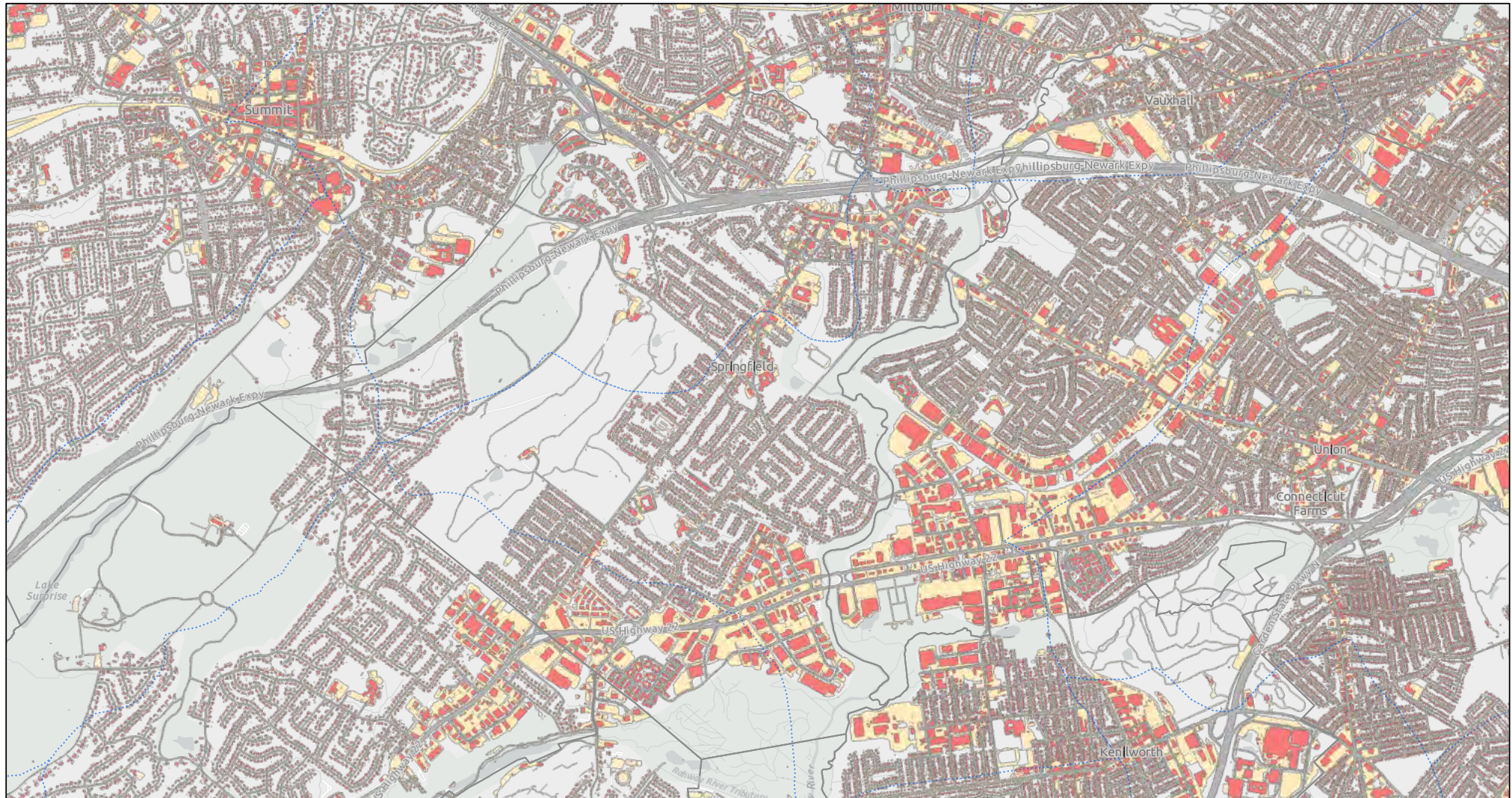
The data in this section were investigated and collected in-person via mobile device between April and August of 2025. Along with in-person collection; plans, zoning maps, and data from GPI and the Township of Springfield Planning Board assisted in data collection. ArcGIS Infrastructure Location Data and the 'New Jersey Watershed Evaluation Tool' (NJ-WET) also assisted in data collection on 12/9/2025.

Table 5: Percent Impervious Cover in each Sub-watershed Within the Township of Springfield

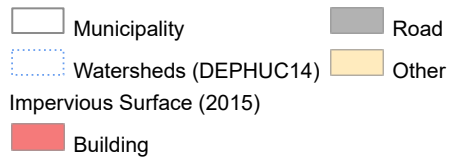
Sub-Watershed	Percent Impervious Cover
02030105120010 Green Bk (above/incl Blue Brook)	25.41%
02030104050050 Nomahegan Brook	31.86%
02030104050040 Rahway R (Kenilworth Blvd to EB / WB)	30.29%
2030104050030 Baltusrol trib (above Springfield Sta)	30.26%
02030104050010 Rahway River WB	60.62%
02030104050020 Rahway River EB	58.14%

The impervious cover causes harmful effects on ecosystems and stream health. This includes increased runoff, increased pollutant loads, and biodiversity loss.

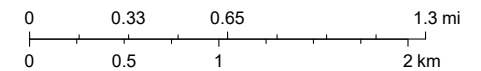
FIGURE 7
IMPERVIOUS AREA WITHIN SPRINGFIELD TOWNSHIP



12/30/2025, 5:35:17 PM



1:35,000



Sources: Esri, TomTom, Garmin, FAO, NOAA, USGS, © OpenStreetMap contributors, and the GIS User Community, NJDEP

Non-Municipally Owned or Operated Stormwater Facilities

The data in this section were investigated and collected in-person via mobile device between April and August of 2025. Along with in-person collection; plans, zoning maps, and data from GPI and the Township of Springfield Planning Board assisted in data collection. ArcGIS Infrastructure Location Data, the Rutgers H&H Database and the 'New Jersey Watershed Evaluation Tool' (NJ-WET) also assisted in data collection on 12/9/2025.

Sub-watersheds within the Township of Springfield's jurisdiction that stormwater infrastructure not owned/operated by Springfield Township are present in:

HUC14 02030104050010 - Rahway River WB
HUC14 02030104050020 - Rahway River EB
HUC14 02030104050030 - Baltusrol trib (above Springfield Sta)
HUC14 02030105120010 - Green Bk (above/incl Blue Brook)
HUC14 02030104050050 - Nomahegan Brook
HUC14 02030104050040 - Rahway R (Kenilworth Blvd to EB / WB)

Table 6: Non-Municipally Owned or Operated Stormwater Facilities

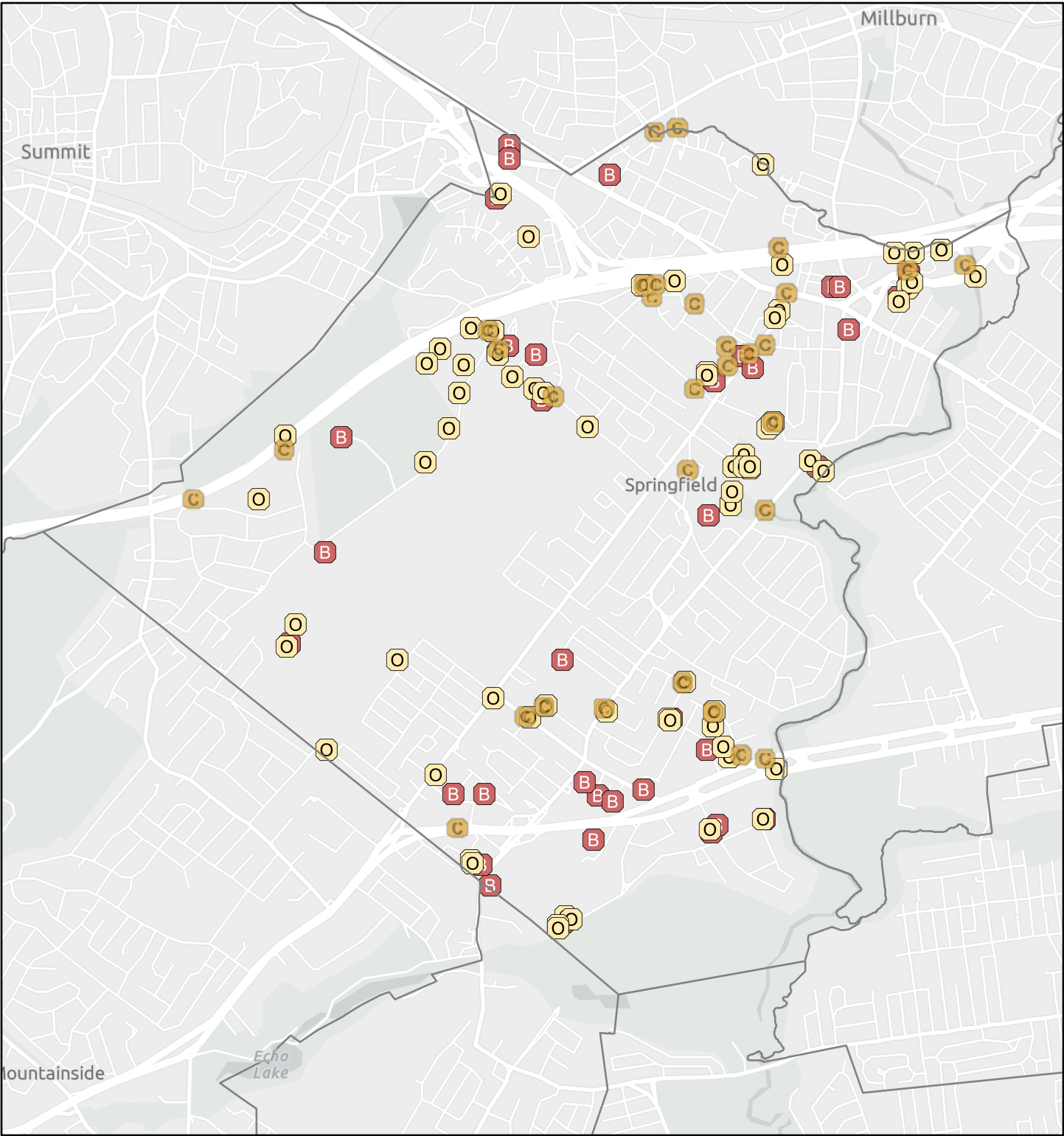
TYPE	ID	Block	Lot	Owner	Sub-Watershed
BASIN	1	101	33	Commerce Bank C/O Lease & Tax Admin	Baltusrol trib (above Springfield Sta)
BASIN	2	908	16	Div Parks & Rec-Union Co Admin Bldg	Rahway R (Kenilworth Blvd to EB / WB)
BASIN	4	1605	1	Baltusrol Golf Club	Rahway R (Kenilworth Blvd to EB / WB)
BASIN	5	3001	8	1140 Kipling Llc	Rahway R (Kenilworth Blvd to EB / WB)
BASIN	6	303	1	Rkspring Et Al Llc C/O Silk Global	Rahway R (Kenilworth Blvd to EB / WB)
BASIN	7	402	26	Columbia Court Apartments	Rahway R (Kenilworth Blvd to EB / WB)
BASIN	8	712	2	Diamond Communications Llc	Baltusrol trib (above Springfield Sta)
BASIN	9	4001	4	Pop Realty Corp	Nomahegan Brook
BASIN	10	209	7	Springfield Equities Llc	Rahway R (Kenilworth Blvd to EB / WB)
BASIN	11	209	7	Springfield Equities Llc	Rahway R (Kenilworth Blvd to EB / WB)
BASIN	12	1604	1	New Jersey Department Of Transportation	Baltusrol trib (above Springfield Sta)
BASIN	13	3701	6	Tudor Court Apartments	Nomahegan Brook
BASIN	14	3701	6	Tudor Court Apartments	Nomahegan Brook
BASIN	15	3701	6	Tudor Court Apartments	Nomahegan Brook
BASIN	16	4001	2	Park Place Assoc	Nomahegan Brook
BASIN	17	3901	6.011	Pine Lane Apartments	Nomahegan Brook
BASIN	18	1105	27	Skyline Ridge Developers, Llc	Baltusrol trib (above Springfield Sta)
BASIN	19	1605	1	Baltusrol Golf Club	Baltusrol trib (above Springfield Sta)
BASIN	20	3703	3	Hjse Realty Llc	Rahway R (Kenilworth Blvd to EB / WB)
BASIN	21	4001	1	Westfield Realty Associates, Llc	Nomahegan Brook
BASIN	22	3801	10	Premium Properties Ii, Llc	Rahway R (Kenilworth Blvd to EB / WB)
BASIN	23	1402	20	Div Parks & Rec-Union Co Admin Bldg	Rahway R (Kenilworth Blvd to EB / WB)
BASIN	24	3901	6.011	Pine Lane Apartments	Nomahegan Brook
BASIN	25	2901	79	Springfield Board Of Education	Rahway R (Kenilworth Blvd to EB / WB)
BASIN	26	506	7	Briant Park Commons, Llc	Baltusrol trib (above Springfield Sta)
BASIN	27	3903	7	966 Realty Management Llc	Nomahegan Brook
BASIN	28	811	5	New Jersey Department Of Transportation	Rahway R (Kenilworth Blvd to EB / WB)
BASIN	29	802	2	Jonathan Dayton High School	Baltusrol trib (above Springfield Sta)
BASIN	31	1201	36	Mountain Avenue Manor Llc	Baltusrol trib (above Springfield Sta)
BASIN	32	1402	5	Springfield Board Of Education	Rahway R (Kenilworth Blvd to EB / WB)
BASIN	33	1605	1	Baltusrol Golf Club	Rahway R (Kenilworth Blvd to EB / WB)
BASIN	34	501	3	Springfield Parcel Llc C/O Ryan Llc	Baltusrol trib (above Springfield Sta)
BASIN	35	502	1	2017 Cleveland Springfield Llc	Baltusrol trib (above Springfield Sta)
BASIN	36	3101	10	Bnl Nj 15 Stern Avenue Llc	Rahway R (Kenilworth Blvd to EB / WB)
BASIN	38	1105	25	Calvary Assembly Of God	Baltusrol trib (above Springfield Sta)
BASIN	39	3101	1	2015 Allaire Urban Karzontrust	Rahway R (Kenilworth Blvd to EB / WB)
BASIN	40	3801	2	Cic Corp	Rahway R (Kenilworth Blvd to EB / WB)
BASIN	41	1201	36	Mountain Avenue Manor Llc	Baltusrol trib (above Springfield Sta)
OUTFALL	5	1605	1	Baltusrol Golf Club	Nomahegan Brook
OUTFALL	6	908	16	Div Parks & Rec-Union Co Admin Bldg	Rahway R (Kenilworth Blvd to EB / WB)
OUTFALL	14	1604	1	New Jersey Department Of Transportation	Baltusrol trib (above Springfield Sta)
OUTFALL	15	RT. 78 ROW	RT. 78 ROW	New Jersey Department Of Transportation	Baltusrol trib (above Springfield Sta)
OUTFALL	16	2602	37	Yeager, Keith & Cendana, Melanie	Baltusrol trib (above Springfield Sta)
OUTFALL	22	1605	1	Baltusrol Golf Club	Rahway R (Kenilworth Blvd to EB / WB)
OUTFALL	24	3903	15	New Jersey Department Of Transportation	Nomahegan Brook
OUTFALL	25	3903	7	966 Realty Management Llc	Nomahegan Brook
OUTFALL	28	3601	2	Union County	Nomahegan Brook
OUTFALL	29	3601	19	Union County	Rahway R (Kenilworth Blvd to EB / WB)
OUTFALL	30	2901	52	Union County	Rahway R (Kenilworth Blvd to EB / WB)
OUTFALL	31	2901	79	Union County	Rahway R (Kenilworth Blvd to EB / WB)
OUTFALL	32	3003	67	Union County	Rahway R (Kenilworth Blvd to EB / WB)
OUTFALL	33	3004	19	Union County	Rahway R (Kenilworth Blvd to EB / WB)
OUTFALL	34	3102	9	Union County	Rahway R (Kenilworth Blvd to EB / WB)
OUTFALL	35	3104	2	New Jersey Department Of Transportation	Rahway R (Kenilworth Blvd to EB / WB)
OUTFALL	39	202	1	Nj American Water Co/Amer Water Ssc	Baltusrol trib (above Springfield Sta)
OUTFALL	44	1402	20	Div Parks & Rec-Union Co Admin Bldg	Rahway R (Kenilworth Blvd to EB / WB)
OUTFALL	45	1402	20	Div Parks & Rec-Union Co Admin Bldg	Rahway R (Kenilworth Blvd to EB / WB)
OUTFALL	49	402	27	Elks Club Bpoe	Rahway R (Kenilworth Blvd to EB / WB)
OUTFALL	54	801	15.02	Union County	Baltusrol trib (above Springfield Sta)
OUTFALL	56	1201	32	Union County	Baltusrol trib (above Springfield Sta)

TYPE	ID	Block	Lot	Owner	Sub-Watershed
OUTFALL	60	RT. 78 ROW	RT. 78 ROW	New Jersey Department Of Transportation	Baltusrol trib (above Springfield Sta)
OUTFALL	61	RT. 78 ROW	RT. 78 ROW	New Jersey Department Of Transportation	Baltusrol trib (above Springfield Sta)
OUTFALL	64	708	2	Union County	Baltusrol trib (above Springfield Sta)
OUTFALL	72	RT. 78 ROW	RT. 78 ROW	New Jersey Department Of Transportation	Baltusrol trib (above Springfield Sta)
OUTFALL	74	3102	13	Union County	Rahway R (Kenilworth Blvd to EB / WB)
OUTFALL	75	3102	14	Union County	Rahway R (Kenilworth Blvd to EB / WB)
OUTFALL	76	3103	36	Union County	Rahway R (Kenilworth Blvd to EB / WB)
OUTFALL	84	908	16	Div Parks & Rec-Union Co Admin Bldg	Rahway R (Kenilworth Blvd to EB / WB)
OUTFALL	90	1605	1	Baltusrol Golf Club	Rahway R (Kenilworth Blvd to EB / WB)
OUTFALL	92	1605	1	Baltusrol Golf Club	Rahway R (Kenilworth Blvd to EB / WB)
OUTFALL	93	3001	8	1140 Kipling Llc	Rahway R (Kenilworth Blvd to EB / WB)
OUTFALL	94	1604	1	New Jersey Department Of Transportation	Baltusrol trib (above Springfield Sta)
OUTFALL	95	1604	1	New Jersey Department Of Transportation	Baltusrol trib (above Springfield Sta)
OUTFALL	96	1604	1	New Jersey Department Of Transportation	Baltusrol trib (above Springfield Sta)
OUTFALL	97	1604	1	New Jersey Department Of Transportation	Baltusrol trib (above Springfield Sta)
OUTFALL	98	1604	1	New Jersey Department Of Transportation	Baltusrol trib (above Springfield Sta)
OUTFALL	99	1604	1	New Jersey Department Of Transportation	Baltusrol trib (above Springfield Sta)
OUTFALL	100	1605	1	Baltusrol Golf Club	Baltusrol trib (above Springfield Sta)
OUTFALL	101	1605	1	Baltusrol Golf Club	Baltusrol trib (above Springfield Sta)
OUTFALL	102	1605	1	Baltusrol Golf Club	Baltusrol trib (above Springfield Sta)
OUTFALL	103	1605	1	Baltusrol Golf Club	Baltusrol trib (above Springfield Sta)
OUTFALL	104	1605	1	Baltusrol Golf Club	Baltusrol trib (above Springfield Sta)
OUTFALL	105	1605	1	Baltusrol Golf Club	Baltusrol trib (above Springfield Sta)
OUTFALL	107	1402	20	Div Parks & Rec-Union Co Admin Bldg	Rahway R (Kenilworth Blvd to EB / WB)
OUTFALL	108	406	20	Union County	Rahway R (Kenilworth Blvd to EB / WB)
OUTFALL	109	RT. 78 ROW	RT. 78 ROW	New Jersey Department Of Transportation	Rahway River WB
OUTFALL	110	RT. 78 ROW	RT. 78 ROW	New Jersey Department Of Transportation	Rahway River WB
OUTFALL	111	RT. 78 ROW	RT. 78 ROW	New Jersey Department Of Transportation	Rahway River WB
OUTFALL	112	RT. 78 ROW	RT. 78 ROW	New Jersey Department Of Transportation	Rahway River WB
OUTFALL	113	402	1	Kavalieros, James	Rahway R (Kenilworth Blvd to EB / WB)
OUTFALL	114	708	2	Union County	Baltusrol trib (above Springfield Sta)
OUTFALL	115	RT. 78 ROW	RT. 78 ROW	New Jersey Department Of Transportation	Baltusrol trib (above Springfield Sta)
OUTFALL	116	506	50	New Jersey Department Of Transportation	Baltusrol trib (above Springfield Sta)
OUTFALL	117	506	4.01	New Jersey Department Of Transportation	Baltusrol trib (above Springfield Sta)
OUTFALL	118	402	26	Columbia Court Apartments	Rahway R (Kenilworth Blvd to EB / WB)
OUTFALL	119	4001	2	Park Place Assoc	Nomahegan Brook
OUTFALL	120	4001	2	Park Place Assoc	Nomahegan Brook
OUTFALL	121	4001	2	Park Place Assoc	Nomahegan Brook
OUTFALL	122	4001	2	Park Place Assoc	Nomahegan Brook
OUTFALL	123	3703	3	Hjse Realty Llc	Rahway R (Kenilworth Blvd to EB / WB)
OUTFALL	124	3801	10	PRIVATE	Rahway R (Kenilworth Blvd to EB / WB)
OUTFALL	125	1402	20	Div Parks & Rec-Union Co Admin Bldg	Rahway R (Kenilworth Blvd to EB / WB)
OUTFALL	126	1402	20	Div Parks & Rec-Union Co Admin Bldg	Rahway R (Kenilworth Blvd to EB / WB)
OUTFALL	127	1402	20	Div Parks & Rec-Union Co Admin Bldg	Rahway R (Kenilworth Blvd to EB / WB)
OUTFALL	128	1402	20	Div Parks & Rec-Union Co Admin Bldg	Rahway R (Kenilworth Blvd to EB / WB)
OUTFALL	130	1201	36	Mountain Avenue Manor Llc	Baltusrol trib (above Springfield Sta)
OUTFALL	131	3001	8	1140 Kipling Llc	Rahway R (Kenilworth Blvd to EB / WB)
OUTFALL	132	1106	1	GDP	Baltusrol trib (above Springfield Sta)
OUTFALL	133	1106	1	GDP	Baltusrol trib (above Springfield Sta)
OUTFALL	135	802	1	Union County	Baltusrol trib (above Springfield Sta)
OUTFALL	136	801	15.02	Union County	Baltusrol trib (above Springfield Sta)
CULVERT	5	1105	27	Union County	Baltusrol trib (above Springfield Sta)
CULVERT	9	101	3	Union County	Baltusrol trib (above Springfield Sta)
CULVERT	11	303	1	Rkspring Et Al Llc C/O Silk Global	Rahway R (Kenilworth Blvd to EB / WB)
CULVERT	12	206	15	Union County	Baltusrol trib (above Springfield Sta)
CULVERT	13	1201	1	Union County	Baltusrol trib (above Springfield Sta)
CULVERT	15	709	37	Union County	Baltusrol trib (above Springfield Sta)
CULVERT	16	710	17	Union County	Baltusrol trib (above Springfield Sta)
CULVERT	37	RT. 78 ROW	RT. 78 ROW	New Jersey Department Of Transportation	Baltusrol trib (above Springfield Sta)
CULVERT	38	RT. 78 ROW	RT. 78 ROW	New Jersey Department Of Transportation	Baltusrol trib (above Springfield Sta)
CULVERT	40	1708	5	Township Of Millburn	Baltusrol trib (above Springfield Sta)

TYPE	ID	Block	Lot	Owner	Sub-Watershed
CULVERT	54	1604	1	Union County	Baltusrol trib (above Springfield Sta)
CULVERT	56	802	1	Union County	Baltusrol trib (above Springfield Sta)
CULVERT	57	1605	1	Baltusrol Golf Club	Baltusrol trib (above Springfield Sta)
CULVERT	58	1402	6	Union County	Rahway R (Kenilworth Blvd to EB / WB)
CULVERT	59	1202	31	Union County	Baltusrol trib (above Springfield Sta)
CULVERT	60	RT. 78 ROW	RT. 78 ROW	New Jersey Department Of Transportation	Baltusrol trib (above Springfield Sta)
CULVERT	61	RT. 78 ROW	RT. 78 ROW	New Jersey Department Of Transportation	Baltusrol trib (above Springfield Sta)
CULVERT	62	803	1	Union County	Baltusrol trib (above Springfield Sta)
CULVERT	63	2901	22	Union County	Rahway R (Kenilworth Blvd to EB / WB)
CULVERT	64	3601	26	Union County	Rahway R (Kenilworth Blvd to EB / WB)
CULVERT	66	802	1	Union County	Baltusrol trib (above Springfield Sta)
CULVERT	67	1201	32	Union County	Baltusrol trib (above Springfield Sta)
CULVERT	68	1402	20	Union County	Rahway R (Kenilworth Blvd to EB / WB)
CULVERT	69	RT. 78 ROW	RT. 78 ROW	New Jersey Department Of Transportation	Rahway R (Kenilworth Blvd to EB / WB)
CULVERT	70	RT. 78 ROW	RT. 78 ROW	New Jersey Department Of Transportation	Baltusrol trib (above Springfield Sta)
CULVERT	71	RT. 22 ROW	RT. 22 ROW	New Jersey Department Of Transportation	Rahway R (Kenilworth Blvd to EB / WB)
CULVERT	72	3102	10	Union County	Rahway R (Kenilworth Blvd to EB / WB)
CULVERT	73	3103	36	Union County	Rahway R (Kenilworth Blvd to EB / WB)
CULVERT	74	3003	27	Union County	Rahway R (Kenilworth Blvd to EB / WB)
CULVERT	75	2901	1	Union County	Rahway R (Kenilworth Blvd to EB / WB)
CULVERT	76	RT. 22 ROW	RT. 22 ROW	New Jersey Department Of Transportation	Nomahegan Brook
CULVERT	54	1604	1	Union County	Baltusrol trib (above Springfield Sta)
CULVERT	56	802	1	Union County	Baltusrol trib (above Springfield Sta)
CULVERT	57	1605	1	Baltusrol Golf Club	Baltusrol trib (above Springfield Sta)
CULVERT	58	1402	6	Union County	Rahway R (Kenilworth Blvd to EB / WB)
CULVERT	59	1202	31	Union County	Baltusrol trib (above Springfield Sta)
CULVERT	60	RT. 78 ROW	RT. 78 ROW	New Jersey Department Of Transportation	Baltusrol trib (above Springfield Sta)
CULVERT	61	RT. 78 ROW	RT. 78 ROW	New Jersey Department Of Transportation	Baltusrol trib (above Springfield Sta)
CULVERT	62	803	1	Union County	Baltusrol trib (above Springfield Sta)

***Local Infrastructure ID's listed above do not represent the quantity of infrastructure type.**

FIGURE 8
Non-municipally Owned/Operated Stormwater Infrastructure in Springfield Township



12/29/2025

— Springfield Township Jurisdiction

O Non-Municipal Outfall

B Non-Municipal Basin

C Non-Municipal Culvert



1:40,000

0 0.25 0.5 1 mi
0 0.4 0.8 1.6 km

Sources: Esri, TomTom, Garmin, FAO, NOAA, USGS, © OpenStreetMap contributors, and the GIS User Community

Conclusion

The Watershed Inventory Report, Phase 1 of the Watershed Improvement Plan, identifies stormwater infrastructure, as required in the MS4 permits. It also summarizes water quality data, including stream classifications, TMDLs, and water quality impairments. The data that accompanies this inventory report has been compiled as an electronic map and submitted to the NJDEP through NJDEP Online via the Stormwater Document Submittal Service. This electronic map can be used as a tool to analyze the data with much greater detail than the maps and tables included will provide. The information from this inventory report will be used to make informed decisions during the creation of the Watershed Assessment Report, Phase 2 of the Watershed Improvement Plan. The work done in Phase 2 will identify areas of potential concern and where potential water quality improvement projects may be implemented to address the highlighted water quality and quantity issues identified in this inventory report.

References

Data Sources

2020 Census of Population and Housing. Retrieved on December 26, 2025 from U.S. Department of Commerce, U.S. Census Bureau website: <https://data.census.gov/>

New Jersey 2022 Integrated Water Quality Report, including the 303(d) Impaired Waters List. Retrieved on December 9, 2025, from New Jersey Department of Environmental Protection, Bureau of Bureau of Environmental Analysis, Restoration and Standards website: <https://dep.nj.gov/wms/bears/integrated-wq-assessment-report-2022/>

New Jersey Watershed Evaluation Tool (NJ-WET). Retrieved on December 5, 2025, from Division of Watershed and Land Management, Bureau of NJPDES Stormwater Permitting website: <https://dep.nj.gov/njpdes-stormwater/municipal-stormwater-regulation-program/watershed-improvement-plan-guidance/>

NJDEP Open Data. Retrieved on December 9, 2025, from Division of Information Technology, NJDEP Bureau of GIS website: <https://gisdata-njdep.opendata.arcgis.com/>

Total Maximum Daily Load (TMDL) Look-Up Tool. Retrieved on December 9, 2025, from New Jersey Department of Environmental Protection, Bureau of NJPDES Stormwater Permitting website: <https://dep.nj.gov/njpdes-stormwater/municipal-stormwater-regulation-program/tmdl/>

New Jersey Hydrologic Modeling Database. Retrieved on December 9, 2025, from the New Jersey Department of Agriculture website: <https://hydro.rutgers.edu/about/>

USGS StreamStats. Retrieved on December 9, 2025, from the United States Geological Survey website: <https://streamstats.usgs.gov/ss/>

NOAA Data Access Viewer. Retrieved on December 9, 2025, from the joint U.S. Department of Commerce and the National Oceanic and Atmospheric Administration website: [NOAA: Data Access Viewer](#)